



24 function color digital gauge for car/RV/boat

Tach, Temp, Volt, Fuel, Oil, RPM, MPH, Amps, and more

- *User configurable touch screen instrument panel*
- *5.7"diag VGA SUNLIGHT COLOR GRAPHIC LCD display*
- *Glass-on-Glass Touch screen for durable operation*
- *Compact 7.25" X 5.6" X 1.75" flush mount aluminum enclosure*
- *Large 640X480 pixel format for dual engine installations*
- *Color alerts and Min/Max alarms for all inputs*
- *Separate Remote Sensor Unit simplifies in-dash wiring*
- *Remote switching option via touch screen buttons*
- *Direct NMEA 2000 network interface option*
- *Only 1.75" thick - easily fits into dash*

Display up to 16 digital gauges and 12 digital switches on one virtual instrument panel. Use supplied PC software to create up to eight customized screens easily accessed via touch screen menus. Show from 1 to 24 **readings at a glance**. Chose from multiple color graphic display formats. 12 analog inputs (Temperature/Pressure/Volts/Fuel) and 3 pulse inputs (RPM/MPH) can be shown from attached remote sensor units located up to 150 feet away. Optional NMEA 2000 network interface to show real-time data in vivid graphical gauge formats. Attach additional remote sensor units for up to 32 functions.

SeaGauge G12HD™ is capable of displaying multiple functions including digital tachometer, RPM, MPH, engine temperature, manifold temperature, exhaust temperature, oil pressure, water pressure, volts, amps, O2, MAP, fuel level, battery charge, **and more** - all in a single multi-function gauge cluster.

Ideal for gauge replacements or upgrades. This unit can also be used in boat, automotive and RV applications as additional instrument clusters.

Compact solid aluminum case is easy to flush mount in any location. Large touch sensitive color display provides viewing in sunlight and allows easy selection of gauges and switches. Programmable alarms use color and audio indicators to warn of damaging conditions. Full VGA panel can show dual engine instrumentation side-by-side on one screen.

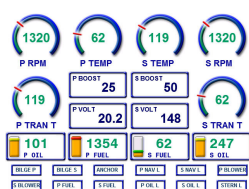
All sender/sensor inputs are programmable to match existing equipment. No need to replace senders. High/Low alarms are programmable for each sensor. Pick and choose your own sender combinations. Unique customizable calibration tables are available for all types of senders and can be downloaded to unit using serial or wireless interface. Simply modify a text file to suit your sensor application. Units can be configured for most standard automotive and marine senders.

All screen graphics and unit firmware be can updated in the field using SD Flash memory card. Just load new display graphics from PC and insert memory card for instant updates. Create your own custom gauge formats.

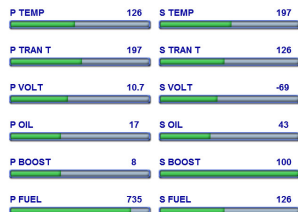
Up to 32 inputs when used with multiple vGauge-Remote sensor units. An additional 12 remote switches can also be controlled from touch menus with optional vSwitch module.

Units have 10 different user defined graphic display modes -

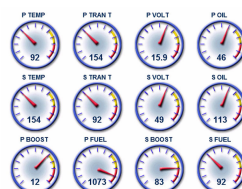
- **Data Display** - Values are displayed with Text labels and digital readouts. Up to 12 can be chosen for each of 8 possible display groups.
- **Text Display** - Sensor value is displayed with Text Label and digital readout along with in three different sized text boxes.
- **Bar Graph Display** - Sensor labels and values are displayed with a 24 segment Bar Graph from Min to Max. Up to 6 can be chosen for each of 8 possible groups. Great for comparing different sensors side-by-side.
- **Digital Gauge Display** - Sensor labels and values are displayed with a dial gauge with 8 segments from Min to Max. Up to 12 can be chosen for each of 8 possible display groups. Great for comparing different sensors side-by-side.
- **Large Dial Display** – Ideal for RPM and MPH display. Include digital readout and graphic fill around perimeter. Up to 6 can chosen per display page.



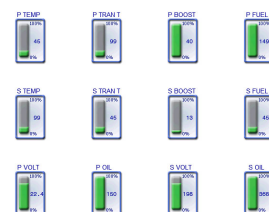
Digital Dial Mode



Bar Graph Mode



Large Dials Mode



vBars Data Mode

Specifications

FEATURE	SeaGauge-G12HD-0A	SeaGauge-G12HD-0P	SeaGauge-G12HD-0M
Display type	5.7" Color touch LCD	5.7" Color touch LCD	8.4" Color touch LCD
Display resolution	640X480	640X480	640X480
Touch Screen	Pressure Sensitive Glass-On-Glass	Pressure Sensitive Glass-On-Glass	Pressure Sensitive Glass-On-Glass
Gauge Layout	6 columns by 6 rows	6 columns by 6 rows	6 columns by 6 rows
Gauge Pages	8	8	8
MAX Gauges per Page	24	24	24
Gauge Display Modes	10 Text, Small text, Dial, Large Dial, Bar graph, Indicators, vBar text	10 Text, Small text, Dial, Large Dial, Bar graph, Histogram, Bar text	10 Text, Small text, Dial, Large Dial, Bar graph, Histogram, Bar text
Display update rate	2 per sec	2 per sec	2 per sec
NMEA update rate	16 per sec	16 per sec	16 per sec
Analog Inputs ¹	12	12	12
Pulse Inputs ¹	3	3	3
NMEA Inputs	16	16	16
NMEA Outputs	16	16	16
Remote Switch ²	12	12	12
Ports	2 Serial or Serial / NMEA 2000	2 Serial or Serial / NMEA 2000	2 Serial or Serial / NMEA 2000
Analog Input types ¹	Temp 0-400°F, Temp 80°-2500°F, PS I 0-150, Volt 0-30, Amp 300, Fuel Level 10-230 OHM, Pulse 0- 12V	Temp 0-400°F, Temp 80°-2500°F, PS I 0-150, Volt 0-30, Amps 300, Fuel Level 10-230 OHM, Pulse 0- 12V	Temp 0-400°F, Temp 80°-2500°F, PS I 0-150, Volt 0-30, Amp 300, Fuel Level 10-230 OHM, Pulse 0- 12V
NMEA 2000 PGNs Inputs supported with optional adapter	127488,127489,127493,127505,12 7508,127501,125502,130323, 130311,130306,130312	127488,127489,127493,127505,12 7508,127501,125502,130323, 130311,130306,130312	127488,127489,127493,127505,12 7508,127501,125502,130323, 130311,130306,130312
Alarms High/Low	16 Audio/Visual	16 Audio/Visual	16 Audio/Visual
Calibration Tables	16	16	16
Calibration resolution	256 X 6 character	256 X 6 character	256 X 6 character
Display Labels	16 X 8 character	16 X 8 character	16 X 8 character
Firmware Update	SD Flash Card	SD Flash Card	SD Flash Card
Power	950 mA at 12V	950 mA at 12V	950 mA at 12V
Case Dimension	7.5" X 6.5" X 2.5"	7.9" X 6.5" X 2.5"	6.4" X 4.2" X 1.25"
Case Type	Painted Flat Aluminum	Sealed ABS Plastic	Open Frame Module

1) When used with vGauge-Remote sensor unit

2) When used with optional vSwitch module