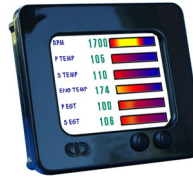




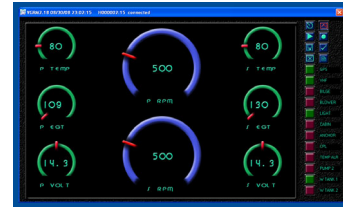
Wi-Fi adapter



Ethernet adapter



vGaugeG12C



vDash PC/Laptop

## 16 function digital gauge for car/RV/boat

- **User configurable sensor inputs with custom calibration tables**
- **Two USB and one Serial interface to PC and remote display heads**
- **Optional interface modules for remote network access to all functions**
- **User settable Min/Max alarms for all inputs**
- **PC/Laptop software for remote viewing and data logging**
- **Remote switching module available for up to 12 circuits**

Create 16 digital gauges and 12 digital switches on one remote sensor interface unit. Use supplied PC software to easily design up to eight customized screens. Choose from multiple sensor inputs including 12 analog (Temperature/Pressure/Volts/Fuel), 2 K-type thermocouple probes, and 3 pulse inputs (RPM/MPH/Fuel Flow) Built-in network ports allow sensor unit to be located up to 150 feet away. Remote LCD displays can be attached for live viewing of all gauges in multiple locations

vGauge Color displays are capable of displaying multiple functions including digital tachometer, RPM, MPH, engine temperature, manifold temperature, exhaust temperature, oil pressure, water pressure, volts, amps, O2, MAP, fuel level, battery charge, **and more** - all in a single multi-function gauge cluster.

Compact plastic case will not rust or corrode and is easy to mount in any location. Standard model includes internal terminal blocks to provide secure attachment of all sensor wires. PRO unit contains specialized interface electronics to allow direct connection of dual tachometer, fuel flow, and pyrometer probes without additional adapters. PRO models also feature quick-connect water-tight cable harnesses and a sealed water-tight case design.

All sender/sensor inputs are programmable to match existing equipment. Unique calibration tables are available for all types of senders and can be downloaded to unit using serial or wireless interface. No need to replace senders. High/Low alarms are programmable for each sensor. Pick and choose your own sender combinations. Units can be configured for most standard automotive and marine senders.

vGauge-Remote is ideal for retrofitting older diesel engines with more reliable gauges and its dual tachometer inputs make it perfect for multi-engine installations. An optional 8/12 remote switch module is also available for touch menu control using vGauge color display heads.

**Specifications**

<b>FEATURE</b>	<b>vGauge Remote Pro</b>	<b>vGauge Remote</b>
Display Support	G12C 5.7" Color touch screen LCD G24N 8.4" Color touch screen LCD G18S 4.3" Color touch screen LCD G12P 5.7" Monochrome LCD G12S 4" Monochrome LCD	G12C 5.7" Color touch screen LCD G24N 8.4" Color touch screen LCD G18S 4.3" Color touch screen LCD G12P 5.7" Monochrome LCD G12S 4" Monochrome LCD
Gauge Layout Pages	8	8
Gauge Display Modes	10	10
Sensor Resolution	0.4% Full scale (1/256)	0.4% Full scale (1/256)
Sensor Readout resolution	4 characters	4 characters
Sensor average rate	16 per second	16 per second
Sensor output rate	2 per sec	2 per sec
NMEA update rate	16 per sec	16 per sec
Analog Inputs <sup>1</sup>	12 (resistive type sender via pull-up or direct voltage via divider)	12 (resistive type sender via pull-up or direct voltage via divider)
Pulse Inputs <sup>1</sup>	3 (built-in interface for inductive, coil, alternator, Hall effect, 12v switch, fuel flow sensor)	3 (built-in interface for inductive, coil, alternator, Hall effect, 12v switch, fuel flow sensor)
K-Type Probes	2 (built-in amplifier)	N/A
NMEA Inputs	6 (RS232 serial at 9600 – 57600 baud)	6 (RS232 serial at 9600 – 57600 baud)
NMEA Outputs	16 (RS232 serial at 9600 – 57600 baud)	16 (RS232 serial at 9600 – 57600 baud)
Remote Switch <sup>2</sup>	8/12 (internal module or separate remote unit)	8/12 (internal module or separate remote unit)
Ports	1 Serial / 2 USB (water-tight connectors)	1 Serial / 2 USB (Type A female)
Port adapter Options	Ethernet, WiFi, Bluetooth	Ethernet, WiFi, Bluetooth
Input types <sup>1</sup>	Temp 0-400°F, Temp 80°-2500°F, Pressure PSI 0-150, Volt 0-30, Amp +/-100, Fuel Level 10-230 OHM, Pulse 0-12V, K-Type pyrometers	Temp 0-400°F, Temp 80°-2500°F, Pressure PSI 0-150, Volt 0-30, Amp +/-100, Fuel Level 10-230 OHM, Pulse 0-12V,
Sensor connections	(3) Quick-Connect water-tight cable harness	(24) internal screw terminal posts
Alarms High/Low	16	16
Calibration Tables	16	16
Calibration resolution	256 X 6 character	256 X 6 character
Display Labels	16 X 8 character	16 X 8 character
Data Logging	Direct to USB Memory Stick PC//Laptop	Direct to USB Memory Stick or PC/Laptop
Firmware Update	USB/Serial	USB/Serial
Alarm Output	5V at 100 mA or Ground at 200 mA (onboard LED indicator)	5V at 100 mA or Ground at 200 mA (onboard LED indicator)
Power Input	850 mA at 12V	850 mA at 12V
Power Output	USB 5V at 2000 mA EXT 5V at 500 ma	USB 5V at 2000 mA EXT 5V at 500 ma
Case Dimension	7.0" X 4.6" X 2.25"	7.0" X 4.6" X 2.25"
Case Type	Water-Tight ABS Plastic (Black or Grey)	ABS Plastic (Black or Grey)

1) alternate configurations are available

2) When used with optional vSwitch module

\* Copyright 2009 Chetco Digital Instruments, Inc. All rights reserved.